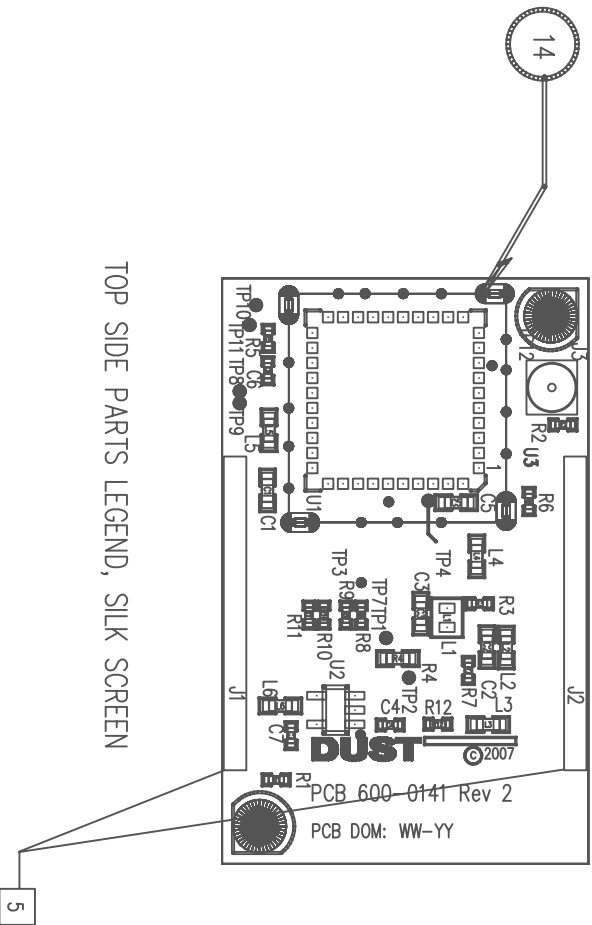


PROPRIETARY NOTICE:  
THE INFORMATION CONTAINED ON THE DOCUMENT IS CONSIDERED TO BE  
CONFIDENTIAL MATERIAL. PROPRIETARY TO DUST NETWORKS AND IS SOLELY  
FOR THE INFORMATION PURPOSES ONLY. THIS INFORMATION SHALL NOT BE USED BY  
ANYONE OTHER THAN DUST NETWORKS TO DESIGN OR CONSTRUCT ANY OF THE  
ITEMS DEPICTED, NOR SHALL IT BE DISCLOSED, DUPLICATED OR COPIED FOR  
ANY PURPOSE, NOR MAKE AVAILABLE TO ANY THIRD PARTY WITHOUT THE  
WRITTEN CONSENT OF A DUST NETWORKS OFFICER.



TOP SIDE PARTS LEGEND, SILK SCREEN

- TOP SIDE ASSEMBLY NOTES:
1. THE FOLLOWING COMPONENTS CAN BE POPULATED IN EITHER ORIENTATION:
  2. WATCH FOR POLARITY OR ORIENTATION MARKINGS ON THE FOLLOWING COMPONENTS:  
U1, U2
  3. FINISHED ASSEMBLY TO BE SHIPPED IN APPROVED ANTI-STATIC PACKAGING
  4. SQUARE PAD DENOTES PIN ONE OF CONNECTORS AND HEADERS.
  5. INSTALL J1 AND J2 ON FAR SIDE.

STUFFING OPTIONS

MODE	R11	R10	R8	R9
1	DNS	0 Ohm	0 Ohm	DNS
2	DNS	DNS	DNS	0 Ohm
3	0 Ohm	DNS	0 Ohm	DNS
1/3	DNS	DNS	0 Ohm	DNS

		UNLESS OTHERWISE SPECIFIED, DIMENSIONS ARE IN INCHES.	
		TOLERANCES ARE: FRACTIONS: DECIMALS: XX ± .01 ANGLES: 0° 30' .XXX ± .005	
		MATERIAL – SEE NOTES.	
SEE ARENA		USED ON	
NEXT ASSY		FINISH – SEE NOTES.	
APPLICATION		DO NOT SCALE DRAWING	
		APPROVALS	
		DRAWN BY: scosuga	
		DATE: 10-10-07	
		CHECKED: ENRG	
		ISSUED	
		CONTRACT NO.	
		SCALE: NONE	
		SHEET 1 OF 1	
		TITLE: PCA ASSY DWG	
		SIP MOTE CARRIER, VOLGA	
		FSQM NO. DWG NO. 705-0141	
		REV. 5	